



ISCOM HT803-U EPON home terminal

▼ Introduction

The ISCOM HT803-U is an EPON uplink home gateway. It provides one GE interfaces, three FE interfaces, two FXS voice interfaces, one CATV interface, and one USB interface, and supports WLAN. It is applicable to FTTH scenarios, with appearance as below.



▼ Features

- Elegant appearance, low power consumption, and good heat dissipation
- Integrated with interoperability feature, meeting key customers' specified requirements and cost-efficiency, and providing tri-network integration
- Controllable remote device, supporting full-frequency FCAPS, including supervision, monitoring, and maintenance
- Highly cost-effective, widely applicable to FTTH networking, providing broadband for emerging services (such as online games, IPTV, VoIP, HDTV, and VoD)
- Passing carriers' internetworking test and centralized procurement test, with guarantee for internetworking with OLTs of other vendors

[International Headquarters](#)

Raisecom Building, No. 11, East Area, No. 10 Block, East Xibeiwang Road, Haidian District, Beijing, 100085, China
Tel: +86 10 8288 3305
Fax: +86 10 8288 3056
Email: export@raisecom.com

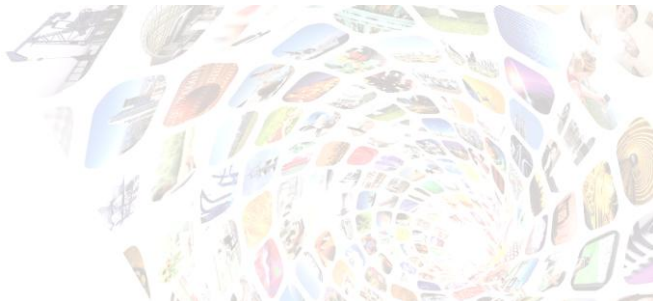
[U.S.A. Headquarters](#)

19337 US 19 North, Suite 306
Clearwater, Florida. 33764. USA.
Tel: +1 888 816 4808
Fax: +1 727 547 9124
Email: sales@raisecomusa.com

Copyright ©1999- 2016

All rights reserved

Technical information is subjected to change without notice



▼ Specifications

Hardware features	
Dimensions	174 mm (Length) × 129 mm (Width) × 38 mm (Height)
Weight	< 0.5 kg
Power consumption	≤ 18 W
Power adapter input	100–240 VAC (50/60 Hz)
Power adapter output	12 VDC, 2 A
Operating temperature	0–50 °C
Operating humidity	10%–93% (non-condensing)
Software features	
Data	<p>The ONU provides four 10/100/1000 Base-T Ethernet interfaces, with the following features:</p> <ul style="list-style-type: none"> • Ethernet auto-negotiation and auto-MDI/MDIX • IEEE 802.11b/g/n WLAN interface • Embedded with Layer 2 switching • Embedded with Layer 3 router and home gateway • Advanced data functions, such as processing VLAN Tags, traffic classification, and packet filtering • USB 2.0 Flash
Video	<ul style="list-style-type: none"> • 2 video services: video stacking and data delivering (through unicast and multicast) • IGMP Snooping and further application optimization: when IGMP Snooping is enabled, the ISCOM HT803-U can purposely choose to send multicast data streams upon detection of a member joining and leaving the multicast group.
Voice	<ul style="list-style-type: none"> • Multiple voice coding schemes • Echo cancellation, VAD, and CNG • Static or dynamic jitter buffer • Various classified services: CID, call waiting, call forward, and call transfer • SIP (RFC3261) and H.248 (MEGACOv2) voice protocols • Common structure and easy replacement. If VoIP access is enabled, the ONT, through Ethernet interface, supports connecting to the addition box of the external network.
OAM	<ul style="list-style-type: none"> • IEEE 802.3ah and China Telecom EPON technical specification standard management interface. • Various services, including Ethernet, WLAN, VoIP, and RF • Alarm and performance monitoring • Mirror-downloading, activating, and restarting software remotely through the OLT • 2 software mirroring inventories, and checking software integrity

International Headquarters

Raisecom Building, No. 11, East Area, No. 10 Block, East Xibeiwang Road, Haidian District, Beijing, 100085, China
 Tel: +86 10 8288 3305
 Fax: +86 10 8288 3056
 Email: export@raisecom.com

U.S.A. Headquarters

19337 US 19 North, Suite 306
 Clearwater, Florida. 33764. USA.
 Tel: +1 888 816 4808
 Fax: +1 727 547 9124
 Email: sales@raisecomusa.com

Copyright ©1999- 2016

All rights reserved

Technical information is subjected to change without notice



<p>IP routing and firewall</p>	<ul style="list-style-type: none"> • Multiple WAN interfaces • WAN connection <ul style="list-style-type: none"> - PPPoE - DHCP - Static configuration • DHCP Server • DHCP Relay • NAT • NAPT • Interface forwarding, static route, ALGs, UPnP, firewall, DMZ, DDNS, NTP, and IGMP Proxy
<p>Ethernet bridge</p>	<ul style="list-style-type: none"> • Wire-speed forwarding • Hardware-based priority queues support CoS in both the uplink and downlink. • IEEE 802.1q virtual switching • IEEE 802.1d bridge • Up to 2K MAC addresses and 4K VLAN groups • Up to 256 multicast groups • Adding/Removing VLAN tag to/from packets of the Ethernet interface • Mapping from IP ToS/DSCP to IEEE 802.1p • CoS based on UNI, VLAN-ID, 802.1p bit, and ToS/DSCP • IEEE 802.1p marking and remarking • IGMPv1/v2 Snooping • Rate limiting on broadcast/multicast packets • MAC address limit
<p>Interface attributes</p>	
<p>EPON interface</p>	<ul style="list-style-type: none"> • Interface type (SMF): SC/APC for the PON interface • Transmission rate: 1.25 Gbit/s in both the uplink and downlink • Central wavelength: 1310 nm for Tx and 1490 nm for Rx • Tx optical power: 0-4 dBm • Maximum Rx sensitivity: -27 dBm • Overloading optical power: -3 dBm
<p>GE interface</p>	<ul style="list-style-type: none"> • 10/100/1000Base-T RJ45 Ethernet interface • Auto-negotiation or manual configuration of the Ethernet interface • Auto-MDI/MDIX
<p>FE interface</p>	<ul style="list-style-type: none"> • 10/100Base-T RJ45 Ethernet interface • Auto-negotiation or manual configuration of the Ethernet interface • Auto-MDI/MDIX

International Headquarters

Raisecom Building, No. 11, East Area, No. 10 Block, East Xibeiwang Road, Haidian District, Beijing, 100085, China
Tel: +86 10 8288 3305
Fax: +86 10 8288 3056
Email: export@raisecom.com

U.S.A. Headquarters

19337 US 19 North, Suite 306 Clearwater, Florida. 33764. USA.
Tel: +1 888 816 4808
Fax: +1 727 547 9124
Email: sales@raisecomusa.com

Copyright ©1999- 2016

All rights reserved

Technical information is subjected to change without notice



POTS interface	<ul style="list-style-type: none"> ● RJ-11 interface ● Balanced ringing, 55 V RMS ● DTMF dialup ● Multiple coding schemes <ul style="list-style-type: none"> – G.711 (μ-law and A-law) – G.729 (A and B) – G.723.1 ● Echo cancellation ● VAD and CNG ● SIP (RFC3261) ● SDP (RFC2327) ● RTP (RFC3550/3551) ● RFC2833 DTMP coding or SIP INFO method ● Multiple classified services, CID, call waiting, call forwarding, call transfer, call switching, three-way calling, classified ringing ● G.711 faxes, modem, and TTY devices ● T.38 fax ● Configurable dial-up plan ● Configurable rings for different countries ● DHCP Client and static IP address
WLAN	<ul style="list-style-type: none"> ● IEEE 802.11b/g/n ● 2.4 GHz ● MIMO: 2x2 ● Multiple SSIDs ● 64-bit and 128-bit WEP ● WPA and WPA-PSK ● WPS for WiFi switching
CATV interface	<ul style="list-style-type: none"> ● Optical connector form: SC/APC ● Range of the CATV Rx wavelength: 1100–1600 nm ● Range of the Rx optical power: -15 to 2 dBm ● The RF output impedance is 75 Ω, with a British F connector, supporting downlink transmission only instead of uplink backhaul. ● RF output level: > 82 dBuV ● CSO: \geq 62 dB; CTB: \geq 65 dB; CNR: \geq 51 dB

International Headquarters

Raisecom Building, No. 11, East Area, No. 10 Block, East Xibeiwang Road, Haidian District, Beijing, 100085, China
Tel: +86 10 8288 3305
Fax: +86 10 8288 3056
Email: export@raisecom.com

U.S.A. Headquarters

19337 US 19 North, Suite 306 Clearwater, Florida. 33764. USA.
Tel: +1 888 816 4808
Fax: +1 727 547 9124
Email: sales@raisecomusa.com

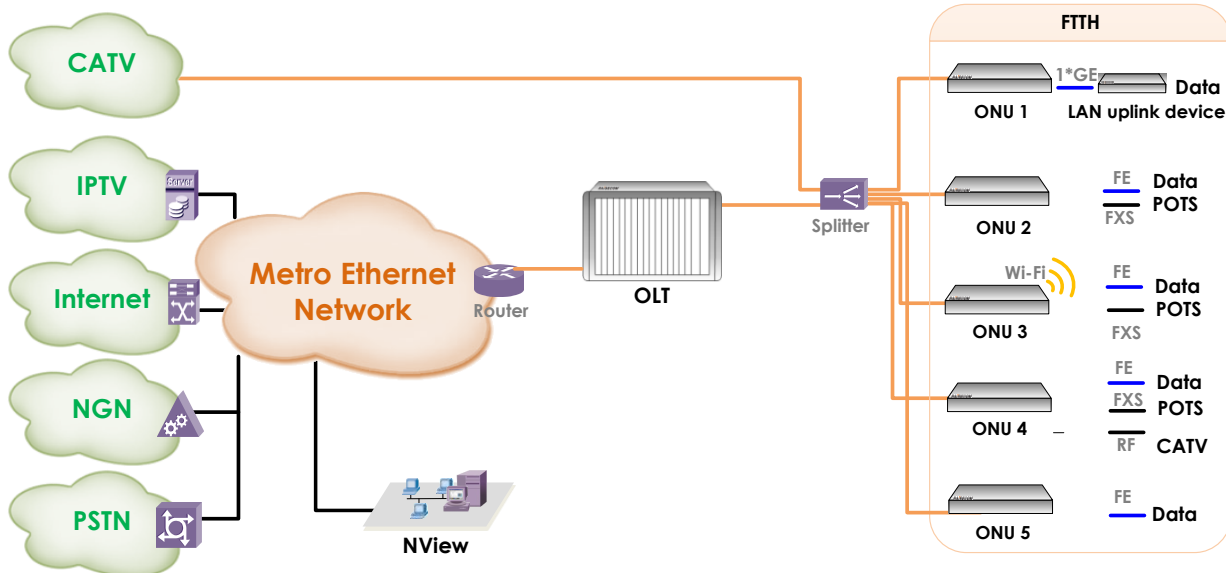
Copyright ©1999- 2016

All rights reserved

Technical information is subjected to change without notice



▼ Typical applications



Networking description

- Use the ONU directly in the user's home.
- Use the high-capacity and high-density ISCOM6800 to access huge services
- The ODN design adopts thin coverage, with a high cost in the early phase
- Actual installation rate is the key to profit.
- Provide high-bandwidth services for users and support various emerging services
- The ONU supports offline configurations, plug and play, thus able to speeding up service activation.
- Various means for locating faults (broken fiber, power failure, and loop)
- Guarantee user experiences, improve renewal rate, and increase customer profit.

Ordering information

Model	Version	Description
ISCOM HT803-U-E-05	T.00(GJ01)	One EPON interface, one 10/100/1000 Mbit/s Ethernet electrical interface, three 10/100 Mbit/s Ethernet electrical interfaces, two FXS voice interfaces, one British CATV interface, one USB interface, WLAN, and American power adapter
ISCOM HT803-U-E-07	T.00(GJ01)	One EPON interface, one 10/100/1000 Mbit/s Ethernet electrical interface, three 10/100 Mbit/s Ethernet electrical interfaces, two FXS voice interfaces, one British CATV interface, one USB interface, WLAN, and European power adapter

International Headquarters

Raisecom Building, No. 11, East Area, No. 10 Block, East Xibeiwang Road, Haidian District, Beijing, 100085, China
Tel: +86 10 8288 3305
Fax: +86 10 8288 3056
Email: export@raisecom.com

U.S.A. Headquarters

19337 US 19 North, Suite 306 Clearwater, Florida. 33764. USA.
Tel: +1 888 816 4808
Fax: +1 727 547 9124
Email: sales@raisecomusa.com

Copyright ©1999- 2016

All rights reserved
Technical information is subjected to change without notice